



Grant County
Office of The
Board of County Commissioners
P O Box 37
Ephrata WA 98823
(509) 754-2011

REQUEST FOR BIDS PACKET (Page 1 of 30)
GRANT COUNTY PARKING LOT REPLACEMENT
Project Number FM14003

March 10, 2014

Grant County, Washington, by and through the Board of County Commissioners, is seeking to enter into a contractual agreement with the qualifying low bidder for the demolition and replacement of parking lot "E" the SW parking lot for the Grant County Courthouse located in Ephrata, Washington.

Each bid shall specify each and every item as set forth in this Request for Bid (RFB) Packet. Any and all exceptions must be clearly stated in the bid submittal. Sections within this RFB Packet are categorized as follows:

- (1) General RFB Information;
 - (2) Bid Preparation and Submission;
 - (3) Vendor Information;
 - (4) Project Requirements and Scope of Work;
 - (5) Price and Payment Proposal Instructions;
 - (6) Post Bid Submittals; and
 - (7) Vendor Checklist.
- Appendix A – *Grant County Bid Proposal Form*
Appendix B – Site Map
Appendix C – Prevailing wage rates at the time of this posting
Appendix D – ADA parking lot Standards

Failure to set forth any item in the RFB Packet without taking exception may be grounds for rejection. Grant County reserves the right to reject all bids and to waive any informality.

If your company is interested and qualified, please ensure the County is in receipt of one original and two (2) copies of your bid in a sealed envelope clearly marked with the project title "Grant County Parking Lot 'E' Replacement Project FM14003" by 3:30 p.m. (PST) on April 10, 2014 to:

June Strickler, Administrative Services Coordinator
Grant County Commissioners' Office
PO Box 37 / 35 C Street NW
Ephrata, WA 98823

Richard Stevens
District 1

Carolann Swartz
District 2

Cindy Carter
District 3

REQUEST FOR BIDS PACKET (Page 2 of 30)
GRANT COUNTY COURTHOUSE Parking Lot "E" REPLACEMENT
Project Number FM14003

Late bids and/or bids submitted via e-mail or facsimile will not be accepted.

Bids will be opened at 3:40 p.m. (PST) on April 10, 2014 at the Grant County Commissioners' Office, located on the 2nd floor of the Grant County Courthouse at 35 C Street NW in Ephrata, Washington.

Grant County is an equal opportunity employer and this invitation extends to all qualifying individuals/companies, including those that are minority and woman-owned.

Should you have any questions about the bid process and/or instructions, please contact me. I may be reached directly at ext. 637. Thank you in advance for your courtesies.

Sincerely,

BOARD OF COUNTY COMMISSIONERS

June Strickler

June Strickler
Administrative Services Coordinator

cc: Board of County Commissioners
Thomas Gaines, Manager, Facilities & Maintenance

REQUEST FOR BIDS PACKET (Page 3 of 30)
GRANT COUNTY COURTHOUSE Parking Lot “E” REPLACEMENT
Project Number FM14003

1. GENERAL RFB INFORMATION

1.1 RFB Notices and Posting Location

To locate RFB notices, postings, etc. on the County’s website for this project, access the County’s website at www.grantcountyweb.com and scroll to the bottom portion of the left sidebar entitled “Grant County Quick Links”. Select the link entitled “Request for Bid”; this will bring you to a listing of current/recent Grant County RFBs listed by project title. Click on the .pdf you are interested in under the *Grant County, Washington Parking Lot “E” Replacement Project #FM14003*.

1.1a Note: It is the responsibility of RFB respondents/vendors to access the County’s RFB website for any and all updates, addendums, corrections, or any other changes and/or other communications regarding this RFB/RFB Packet prior to the RFB deadline.

1.2 Objective of this RFB

The purpose of this Request for Bids is to secure the demolition and replacement of a Parking lot “E”, the SW parking lot for the Grant County Courthouse Campus located in Ephrata, Washington pursuant to the requirements and scope of work set forth within this RFB packet. The parking lot is approximately 15,800 square feet in size; Contractor is responsible for accurate measurements in regards to his/her bid.

1.3 RFB Organization

The RFB is composed of six (6) sections, organized as follows:

Section 1 – GENERAL RFP INFORMATION

- 1.1 RFB Notices, Posting Location
- 1.2 Objective of this RFB
- 1.3 RFB Organization
- 1.4 RFB Official Contact(s)
- 1.5 Questions Regarding the RFB
- 1.6 Bidder Responsibility Criteria (RCW 39.04.350)

Section 2 – BID PREPARATION AND SUBMISSION

- 2.1 General Information
- 2.2 Bid Submittal, Format, Misc.
- 2.3 Bid Evaluations
- 2.4 Bid Preparation Instructions

Section 3 – VENDOR INFORMATION

- 3.1 Signature and Representations
- 3.2 Company Information
- 3.3 Subcontractor(s)
- 3.4 Warranties

Section 4 – PROJECT REQUIREMENTS AND SCOPE OF WORK

- 4.1 General Overview

REQUEST FOR BIDS PACKET (Page 4 of 30)
GRANT COUNTY COURTHOUSE Parking Lot "E" REPLACEMENT
Project Number FM14003

- 4.2 Advanced Coordination/Timeliness
- 4.3 Drug, Alcohol, and Weapons-Free Worksite
- 4.4 Method of Measurement
- 4.5 Completion of Work

Section 5 – PRICE AND PAYMENT PROPOSAL INSTRUCTIONS

- 5.1 Fees and Insurance
- 5.2 Indemnification
- 5.3 Price Proposal

Section 6 – POST BID SUBMITTALS

- 6.1 Claims of Error
- 6.2 Bid Protests
- 6.3 Determination of Non-Responsible Bidder

Section 7 – PROPOSAL CHECKLIST

1.4 RFB Official Contact(s)

Upon release of this RFB, all vendor communications must be directed to the RFB Official Contacts listed below. Unauthorized contact regarding this RFB with other County employees may result in disqualification. Any oral communications are discouraged and will be considered unofficial and non-binding on the County. Vendors may only rely upon written statements issued by the appropriate RFB Official Contact:

For RFB Submittal Process/Requirements:

Name:	June Strickler
Title:	Admin. Services Coordinator
Address:	35 C Street NW Ephrata, WA 98823
Telephone:	(509) 754-2011 ext. 637
Fax:	(509) 754-6098
E-mail:	jstrickler@co.grant.wa.us

For Parking Lot Demolition and Replacement Project:

Name:	Tom Gaines
Title:	Manager, Facilities & Maint.
Address:	35 C Street NW Ephrata, WA 98823
Telephone:	(509) 754-2011 x 376
Fax:	(509) 754-6007
E-mail:	tgaines@co.grant.wa.us

1.5 Questions Regarding the RFB

Vendors who request a clarification of the RFB requirements may submit written questions to the appropriate RFB Official Contact by mail, facsimile, or e-mail. The deadline for receipt of technical questions is April 2, 2014, at 5:00 p.m. (PST). Questions received and answers to those questions will be posted on the County's website (see Section 1.1 above) on or before April 4, 2014.

REQUEST FOR BIDS PACKET (Page 5 of 30)
GRANT COUNTY COURTHOUSE Parking Lot “E” REPLACEMENT
Project Number FM14003

1.6 Bidder Responsibility Criteria (RCW 39.04.350)

A responsive bidder must meet the bidder responsibility criteria as set out in RCW 39.04.350, *Bidder responsibility criteria – Supplemental criteria*:

1.6a Before award of a public works contract, a bidder must meet the following responsibility criteria to be considered a responsible bidder and qualified to be awarded a public works project. The bidder must:

1. At the time of bid submittal, have a certificate of registration in compliance with chapter [18.27](#) RCW;
2. Have a current state unified business identifier number;
3. If applicable, have industrial insurance coverage for the bidder's employees working in Washington as required in Title [51](#) RCW; an employment security department number as required in Title [50](#) RCW; and a state excise tax registration number as required in Title [82](#) RCW; and
4. Not be disqualified from bidding on any public works contract under RCW [39.06.010](#) or [39.12.065](#)(3).

1.6b A bid bond at five (5%) of the proposed bid price as required by RCW 36.32.235 shall accompany the bid.

2. BID PREPARATION AND SUBMISSION

2.1 General Information

2.1a All respondents should read the entire RFB Packet carefully. Failure to comply with instructions may result in a bid being disqualified from consideration by the County.

2.1b It is the vendor's responsibility to review the County's website to obtain amendments, updates, question answers, etc. on this project. The specific website location for this project is detailed in Section 1.1 above.

2.2 Bid Submittal, Format, Misc.

2.2a All bid submittals, consisting of one original and two (2) copies, must be received by the County *via* mail, recognized carrier, or hand delivery no later than 3:30 p.m. (PST) on April 10, 2014, as displayed on Grant County's official time/date stamp located in the Office of the Board of County Commissioners. Late bid submittals and/or bid submittals submitted *via* e-mail or facsimile will not be considered.

2.2b All bids must be received by the County in a sealed envelope clearly marked with the project title "Grant County Courthouse Parking Lot 'E' Replacement Project FM14003" and be directed to:

REQUEST FOR BIDS PACKET (Page 6 of 30)
GRANT COUNTY COURTHOUSE Parking Lot “E” REPLACEMENT
Project Number FM14003

June Strickler, Administrative Services Coordinator
Grant County Commissioners’ Office
PO Box 37 / 35 C Street NW
Ephrata, WA 98823

2.2c Costs of preparation and presentation of the bid will be borne by the vendor.

2.2d Bids must be typed/computer generated or written in such a manner as to be clearly legible; any bid that contains illegible information and/or dollar amounts subject to interpretation will render the entire bid to be designated “Non-responsive” as it will not allow the County to confidently compare bid prices.

2.2e A cover letter is required, as set forth in Section 3.1 below.

2.2f Bids should contain straightforward and concise descriptions of the vendor’s capabilities to satisfy the requirements of this RFB Packet. Emphasis should be concentrated on accuracy, completeness, and clarity of content.

2.2g Grant County requires a signed, completed Grant County bid form with each qualifying bid submittal packet. The Grant County Facilities & Maintenance *Bid Proposal* form is located in Appendix A.

2.2h Bids must include itemized breakdowns of all costs and include all fees.

2.2i Bids must show numerical dollar amounts with decimal and commas (as appropriate). Any required pricing breakdown that indicates “No Bid” or similar wording or is left blank will render the entire bid to be designated “Non-responsive” as it will not allow the County to confidently compare bid prices.

2.2j Mathematical calculations/totals on all bids will be checked by Grant County, and the County has the authority to correct any mathematical errors it identifies. For this reason, bids that appear to be higher or lower than others immediately upon bid opening may not be accurate. Grant County will not post the bid results until after the mathematical verification and totals check has been completed on each bid. Should any mathematical errors in submittals be identified, the County will notify the affected responders and the bid posting will reflect any necessary changes to the bid total(s).

2.2k In the event of a low bid tie between qualifying vendors after verification of mathematical calculations/totals, a random method – such as a coin toss – to determine the low bid will be utilized.

2.2l A request for awarding a contract/agreement to be signed by the qualifying low bidder will be made by Grant County Facilities & Maintenance to the Board of County Commissioners as set forth in Section 2.3a.4 below.

2.2m This request does not constitute an offer of employment or to contract for services.

2.2n The County reserves the option to reject any or all bids, wholly or in part, received by reason of this request.

REQUEST FOR BIDS PACKET (Page 7 of 30)
GRANT COUNTY COURTHOUSE Parking Lot “E” REPLACEMENT
Project Number FM14003

2.2o The County reserves the option to retain all bids, whether selected or rejected. Once submitted, the bids and any supplemental documents become the property of the County.

2.2p All bids shall remain firm for ninety (90) days following the closing date for receipt of proposals.

2.3 Bid Evaluations

2.3a The County will evaluate bids and determine responsiveness as follows:

Grant County Facilities & Maintenance will perform an initial screening of each bid to determine responsiveness. A bid deemed responsive is one that materially conforms to the instructions/requirements of this RFB Packet, including the bidder meeting the requirements of a responsible bidder pursuant to RCW 39.04.3560 (addressed in Section 1.8 above).

The County reserves the right to reject or accept any bid with immaterial irregularities.

Bid pricing must be itemized and submitted on all required items set forth in Section 4, Project Requirements and Scope of Work, and be completed on The Grant County Facilities & Maintenance *Bid Proposal* form, which serves as Appendix A to this RFB.

Once Grant County Facilities & Maintenance has determined that a bid is responsive and mathematical calculations on the bid have been checked and/or corrected pursuant to paragraph 2.2j above, it will be compared to other responsive bid(s). All bids regardless of alternates will be awarded on the “base” bid information.

2.3b The responsible individual/company (pursuant to RCW 39.04.350) with the lowest responsive bid as set forth in this section will be named as the apparent successful bidder and recommended to the Board of County Commissioners for award of the contract.

2.4 Bid Preparation Instructions

Bids must conform to all the requirements of this RFB Packet.

3. VENDOR INFORMATION

Bid submittals shall contain the following information and conform to the following requirements:

3.1 Signature and Representations

All bids must include a cover letter signed by an official of the company authorized to bind the company to the bid and pricing.

3.1a The signed cover letter must contain the following statements, without alteration:

REQUEST FOR BIDS PACKET (Page 8 of 30)
GRANT COUNTY COURTHOUSE Parking Lot “E” REPLACEMENT
Project Number FM14003

The bid's pricing shall be valid and binding for Ninety (90) days following the RFB response due date and will become part of any contract with the County unless revisions, additions and/or deletions are expressly negotiated.

It is acknowledged that this bid is subject to public disclosure under the Public Records Act and may be released in total as public information in accordance with Washington law. Any and all information believed to be proprietary and exempt from public disclosure has been plainly and clearly marked or otherwise identified.

3.2 Company Information

Provide the company name, address, telephone number, federal employer tax number and Washington state business registration number. Provide the name, title, address and telephone number of the contact person authorized to represent the company and to whom correspondence should be directed.

3.3 Subcontractors

Indicate and specify whether or not subcontractor(s) will be used for demolition of the old parking lot, the replacement of pavement, and/or clean up and disposal, etc.

Contractor assumes liability that, in accordance with Washington law, all subcontractors are required to file intents and affidavits for prevailing wage work just as the prime contractor shall do. Furthermore it is understood that five percent (5%) retainage is withheld until a Notice of Completion is accepted by the following agencies with notification given to Grant County: the Washington State Department of Labor & Industries, Employment Securities, and the Department of Revenue. Only after Grant County is notified of this acceptance by all three agencies will the retainage be released.

3.4 Warranties

Provide all warranty and exclusion of warranty language for the product(s).

4. PROJECT REQUIREMENTS AND SCOPE OF WORK

4.1 General Overview – Grant County Facilities & Maintenance, located at 35 C Street in Ephrata, Washington, is seeking to replace one parking lot (noted as Parking Lot “E”) at the Courthouse complex; the parking lot is approximately 15,800 square feet.

The contractor shall provide all material, labor, equipment, supervision, and whatsoever else is necessary to accomplish the following:

1. Demolish all existing pavement and concrete in the area identified for paving;
2. Demolition & removal of any and all debris;
3. Grading;
4. Removal of excess material if required;
5. Crushed Rock, Compaction, Sterilization;
6. Minimum 2.5 inches of HMA;

REQUEST FOR BIDS PACKET (Page 9 of 30)
GRANT COUNTY COURTHOUSE Parking Lot "E" REPLACEMENT
Project Number FM14003

7. Striping to include ADA spaces as required; and
8. Striping of new parking lot

All soft and spongy places shall be removed and all depressions filled with suitable material which shall be thoroughly compacted in layers not exceeding six (6) inches in thickness.

4.1a Contractor is expected to subcontract the striping of the parking lot and should include ADA stalls as per ADA access requirements noted in this RFB (Appendix A) All work is expected to be completed within 15 calendar days from the notice to proceed or by May 10th 2014

4.2 Advanced Coordination/Timeliness - This project is safety and facility access sensitive and will require advanced coordination with the Facilities & Maintenance Manager to complete the project in a timely manner while ensuring the safety of operations and continuation of access to the facility by the public. The successful bidder must be able to complete the project with all work finalized on or before **May 15, 2014**.

4.3 Drug, Alcohol, and Weapons-Free Worksite – Due to the safety and security requirements of the Courthouse facility, each contractor/subcontractor must take reasonable action to ensure that its owners/employees maintain a presence at the worksite that is free from substance abuse and the carrying of weapons.

4.4 Method of Measurement. Specific measurements for bid shall be the responsibility of the contractor interested in bidding and will not be given *via* e-mail or phone conversations. ***Measurements in this RFB are only approximate***

4.5 Completion of Work – Prior to the County's acceptance of the work, the prime contractor must complete and/or ensure that all subcontractor work is completed to finish quality and that all surplus and/or rejected materials and unsightly objects such as stones, stumps, limbs, roots, concrete, etc. have been removed from the site, properly disposed of, and that all cleanup has been accomplished and the site is of a neat appearance.

5. PRICE AND PAYMENT PROPOSAL INSTRUCTIONS

5.1 Fees and Insurance

5.1a Propose all fixed fees and/or hourly rates of pay, as appropriate, for implementation of services as described within the RFP.

5.1b On the forms included in the Contract Provisions, the Contractor shall furnish a performance bond, which guarantees the Contractor's faithful performance of the Contract, and a labor and material payment bond, which guarantees the Contractor's payment for all tax's, labor, material, Subcontractors and material and equipment suppliers. Each bond shall have a penal sum in the full amount of the Contract price,

REQUEST FOR BIDS PACKET (Page 10 of 30)
GRANT COUNTY COURTHOUSE Parking Lot "E" REPLACEMENT
Project Number FM14003

including sales tax. The labor and material payment bond shall remain in force until the Contract Completion Date, and for such period of time thereafter during which the law allows claims to be filed and finally resolved by litigation. In addition to securing the faithful performance of all Contractors obligations under the Contract, the performance bond shall remain in force for a period of at least two years after the Substantial Completion Date, with respect to defective workmanship, equipment, and materials, and shall otherwise secure all other obligations of the Contractor throughout all periods of limitation and repose. The Contractor shall be required to provide extended warranties for specific materials or equipment as indicated further in the Contract Provisions. The required performance bond and labor and material payment bond shall each be issued by a corporate surety company acceptable to the Owner and authorized to do business in the state in which the work is located.

5.1c Within five (5) business days after final signatures are obtained on the contract, the individual/agency shall provide the County with a certificate of liability insurance naming Grant County and its employees and officers as additionally named insured. Said insurance shall be maintained in full force and effect for the duration of the contract and must be in an amount and format satisfactory to the County. Proof of insurance should be directed to the County's Administrative Services Coordinator (contact information is located on page 4 of 16).

5.2 Indemnification

The individual/agency shall defend, indemnify and hold harmless the County, its officers and employees from all claims, demands, damages, costs, expenses, judgments, attorney fees, liabilities or other losses that may be asserted by any person or entity, and that arise out of or are made in connection with the acts or omissions relating to the performance of any duty, obligation, or work hereunder. The obligation to indemnify shall be effective and shall extend to all such claims and losses, in their entirety, even when such claims or losses arise from the comparative negligence of the County, its officers and employees. However, this indemnity will not extend to any claims or losses arising out of the sole negligence or willful misconduct of the County, its officers and employees.

The preceding paragraph applies to any theory of recovery relating to said act or omission, by the individual/agency, or its agents, employees, or other independent contractors directly responsible to individual/agency including, but not limited to the following:

- 5.2a Violation of statute, ordinance, or regulation;
- 5.2b Willful, intentional or other wrongful acts, or failures to act;
- 5.2c Negligence or recklessness;
- 5.2d Furnishing of defective or dangerous products;
- 5.2e Premises liability;

REQUEST FOR BIDS PACKET (Page 11 of 30)
GRANT COUNTY COURTHOUSE Parking Lot “E” REPLACEMENT
Project Number FM14003

5.2f Strict Liability;

5.2g Violation of civil rights; and/or

5.2h Violation of any federal or state statute, regulation, or ruling resulting in a determination by the Internal Revenue Service, Washington State Board of Tax Appeals or any other Washington public entity responsible for collecting payroll taxes, when the agency/firm is not an independent contractor.

It is the intent of the parties to provide the County the fullest indemnification, defense, and “hold harmless” rights allowed under the law. If any word(s) contained within the contract are deemed by a court to be in contravention of applicable law, said word(s) shall be severed from the contract and the remaining language shall be given full force and effect.

5.3 Price Proposal

5.3a Payment will be made for all items complete and accepted on the unit or lump sum prices as stated in the proposal and measured and previously stated. The sum of each payment shall be full compensation for all materials, labor, and other costs to the Contractor.

5.3b Contractor is aware that this project is a “public work” as defined by RCW 39.04 and WAC 296-127 and is subject to the prevailing wage laws of the State of Washington. The qualifying low bid Contractor will be required to produce Certified Payroll Records to Grant County upon request. A five percent (5%) retainage will be withheld as referenced in Section 3.6.

5.3c Interested parties may contact the Facilities Manager to schedule a walkthrough or to answer any questions.

5.3d The proposal shall include the cost of all material, labor, engineering, surveying, grading, saw cutting, clean up, M.O.T. (Maintenance of Traffic), hauling, disposal of all material removed, mobilization, and all other fees and costs. If any of these items are not included, the bid will be considered non responsive.

5.3e The contractor shall provide a warranty and the proposal shall describe in detail the duration, terms and conditions of the proposed warranty. The proposal shall include the contractor’s complete terms and payment schedule. Grant County will inspect all work.

6. POST BID SUBMITTALS

6.1 Claims of Error

REQUEST FOR BIDS PACKET (Page 12 of 30)
GRANT COUNTY COURTHOUSE Parking Lot “E” REPLACEMENT
Project Number FM14003

6.1a Any claim of bid error by a respondent that occurs within twenty-four (24) hours of bid opening must be:

1. Submitted in writing;
2. Marked “URGENT”;
3. Addressed to the County’s Project Manager, Tom Gaines;
4. Delivered to and in the care of the Office of the Board of County Commissioners, located on the 2nd floor of the Grant County Courthouse at 35 C Street NW in Ephrata, Washington;
5. Identify the project bid and date of bid opening; and
6. Request authorization for withdrawal of the bid.

6.1b Grant County will automatically approve, in writing, any such timely and properly reported bid error and request for bid withdrawal it receives. The withdrawn bid will be identified as such in the County’s records and the submitted packet will remain a public record within the County’s records pursuant to Washington State’s Public Disclosure Act.

6.1c Grant County reserves the right to give consideration to any claim of bid error not meeting the criteria set forth in Section 6.1 paragraph 6.1a if doing so is believed by the County to be in the best interest of the County and the public it serves.

6.2 Bid Protests

6.2a The deadline for appealing a determination that a bidder is not responsible as set forth in Section 1.8 above must occur within twenty-four (24) hours of the bid opening and be:

1. Submitted in writing;
2. Marked “URGENT”;
3. Addressed to the County’s Project Manager, Tom Gaines;
4. Delivered to and in the care of the Office of the Board of County Commissioners, located on the 2nd floor of the Grant County Courthouse at 35 C Street NW in Ephrata, Washington;
5. Identify the project bid and date of bid opening; and
6. Identify the purported non-qualifying bidder and the applicable sections of RCW 39.04.350 which render that bidder non-qualifying.

6.2b Grant County will have three (3) working days to make a determination as to the apparent qualifying low bidder’s meeting or not meeting the requirements of RCW 39.04.350 and the reason(s) for the determination.

REQUEST FOR BIDS PACKET (Page 13 of 30)
GRANT COUNTY COURTHOUSE Parking Lot “E” REPLACEMENT
Project Number FM14003

6.3 Determination of Non-Responsible Bidder

6.3a Should Grant County determine that a bidder does not meet the requirements of a responsible bidder pursuant to RCW 39.04.3560, it will provide, in writing, the reason(s) for the determination. The bidder may appeal the determination within three (3) working days by presenting additional information to Grant County. The County will consider the additional information before issuing its final determination. If the final determination affirms that the bidder is not responsible, the Grant County may not and will not execute a contract with any other bidder until two (2) business days after the bidder determined to be not responsible has received the final determination.

7. VENDOR CHECKLIST

A complete proposal will include:

- _____ Checks of the County website for any and all amendments to the RFP Packet and/or other notices;
- _____ A signed cover letter containing required information;
- _____ The provision of all vendor/company information requested;
- _____ One original and two copies in a sealed envelope, properly labeled; and
- _____ Completed/signed Grant County *Bid Proposal* form.

REQUEST FOR BIDS PACKET (Page 14 of 30)
GRANT COUNTY COURTHOUSE Parking Lot "E" REPLACEMENT
Project Number FM14003

APPENDIX A
(Page A-1)

Project Name: Parking Lot "E" Replacement Project No.: FM14003
Name of Firm: _____

**GRANT COUNTY
FACILITIES & MAINTENANCE
35 C STREET NW
EPHRATA WA, 98823
509-754-2011 EXT. 367**

B I D P R O P O S A L

In compliance with the contract documents, the following bid proposal is submitted:

1) BASE BID for furnishing all labor, materials, equipment, and all else whatsoever necessary to demolish and remove asphalt and miscellaneous material in parking lot "E" in order to properly replace the parking lot located at the Grant County Courthouse campus, Project # FM14003.

\$ _____
(Do not include Washington State Sales Tax)

Mobilization		\$ _____
HMA @ 2.5"	_____	\$ _____
Demolition		\$ _____
Grading		\$ _____
MOT		\$ _____
Striping		\$ _____
TOTAL (SHOULD EQUAL BASE BID)		\$ _____

****COMPLETE ALL FIELDS AND SIGN****



SIGNATURE OF AUTHORIZED REPRESENTATIVE: _____

Grant County reserves the right to accept or reject any or all bid prices within sixty (60) days of the bid date.

REQUEST FOR BIDS PACKET (Page 15 of 30)
GRANT COUNTY COURTHOUSE Parking Lot "E" REPLACEMENT
Project Number FM14003

APPENDIX B
 (Page B-1)



REQUEST FOR BIDS PACKET (Page 16 of 30)
GRANT COUNTY COURTHOUSE Parking Lot “E” REPLACEMENT
Project Number FM14003

APPENDIX C
(Page C-1)

Effective Date:



[Get Wages](#)

[Download Wages](#)

[Apprentice Wages](#) **Benefit**

Code Key for 3/10/2014

County	Trade	Job Classification	Wage	Holiday	Overtime	Note
Grant	Laborers	Air And Hydraulic Track Drill	\$35.35	<u>7B</u>	<u>1M</u>	
Grant	Laborers	Asphalt Raker	\$35.35	<u>7B</u>	<u>1M</u>	
Grant	Laborers	Asphalt Roller, Walking	\$35.08	<u>7B</u>	<u>1M</u>	
Grant	Laborers	Brick Pavers	\$34.81	<u>7B</u>	<u>1M</u>	
Grant	Laborers	Brush Hog Feeder	\$34.81	<u>7B</u>	<u>1M</u>	
Grant	Laborers	Brush Machine	\$35.35	<u>7B</u>	<u>1M</u>	
Grant	Laborers	Caisson Worker, Free Air	\$35.35	<u>7B</u>	<u>1M</u>	
Grant	Laborers	Carpenter Tender	\$34.81	<u>7B</u>	<u>1M</u>	
Grant	Laborers	Cement Finisher Tender	\$35.08	<u>7B</u>	<u>1M</u>	
Grant	Laborers	Cement Handler	\$34.81	<u>7B</u>	<u>1M</u>	
Grant	Laborers	Chain Saw Operator & Faller	\$35.35	<u>7B</u>	<u>1M</u>	
Grant	Laborers	Clean-up Laborer	\$34.81	<u>7B</u>	<u>1M</u>	
Grant	Laborers	Compaction Equipment	\$35.08	<u>7B</u>	<u>1M</u>	
Grant	Laborers	Concrete Crewman	\$34.81	<u>7B</u>	<u>1M</u>	
Grant	Laborers	Concrete Saw, Walking	\$35.08	<u>7B</u>	<u>1M</u>	
Grant	Laborers	Concrete Signalman	\$34.81	<u>7B</u>	<u>1M</u>	
Grant	Laborers	Concrete Stack	\$35.35	<u>7B</u>	<u>1M</u>	
Grant	Laborers	Confined Space Attendant	\$34.81	<u>7B</u>	<u>1M</u>	
Grant	Laborers	Crusher Feeder	\$34.81	<u>7B</u>	<u>1M</u>	
Grant	Laborers	Demolition	\$34.81	<u>7B</u>	<u>1M</u>	
Grant	Laborers	Demolition Torch	\$35.08	<u>7B</u>	<u>1M</u>	
Grant	Laborers	Dope Pot Fireman, Non-mechanical	\$35.08	<u>7B</u>	<u>1M</u>	
Grant	Laborers	Driller Helper (when Required To Move & Position Machine)	\$35.08	<u>7B</u>	<u>1M</u>	
Grant	Laborers	Drills With Dual Masts	\$35.63	<u>7B</u>	<u>1M</u>	
Grant	Laborers	Dry Stack Walls	\$34.81	<u>7B</u>	<u>1M</u>	
Grant	Laborers	Dumpman	\$34.81	<u>7B</u>	<u>1M</u>	
Grant	Laborers	Erosion Control Laborer	\$34.81	<u>7B</u>	<u>1M</u>	
Grant	Laborers	Final Detail Cleanup (i.e., Dusting, Vacuuming, Window Cleaning; Not Construction Debris Cleanup)	\$32.71	<u>7B</u>	<u>1M</u>	
Grant	Laborers	Firewatch	\$34.81	<u>7B</u>	<u>1M</u>	
Grant	Laborers	Form Cleaning Machine Feeder, Stacker	\$34.81	<u>7B</u>	<u>1M</u>	

REQUEST FOR BIDS PACKET (Page 17 of 30)
GRANT COUNTY COURTHOUSE Parking Lot “E” REPLACEMENT
Project Number FM14003

APPENDIX C
(Page C-2)

Grant	Laborers	Form Setter, Paving	\$35.08	<u>7B</u>	<u>1M</u>	
Grant	Laborers	General Laborer	\$34.81	<u>7B</u>	<u>1M</u>	
Grant	Laborers	Grade Checker	\$37.34	<u>7B</u>	<u>1M</u>	
Grant	Laborers	Grout Machine Header Tender	\$34.81	<u>7B</u>	<u>1M</u>	
Grant	Laborers	Guard Rail	\$34.81	<u>7B</u>	<u>1M</u>	
Grant	Laborers	Gunite	\$35.35	<u>7B</u>	<u>1M</u>	
Grant	Laborers	Hazardous Waste Worker (level A)	\$35.63	<u>7B</u>	<u>1M</u>	
Grant	Laborers	Hazardous Waste Worker (level B)	\$35.35	<u>7B</u>	<u>1M</u>	
Grant	Laborers	Hazardous Waste Worker (level C)	\$35.08	<u>7B</u>	<u>1M</u>	
Grant	Laborers	Hazardous Waste Worker (level D)	\$34.81	<u>7B</u>	<u>1M</u>	
Grant	Laborers	Hdpe Or Similar Liner Installer	\$34.81	<u>7B</u>	<u>1M</u>	
Grant	Laborers	High Scaler	\$35.35	<u>7B</u>	<u>1M</u>	
Grant	Laborers	Jackhammer Operator Miner, Class "b"	\$35.08	<u>7B</u>	<u>1M</u>	
Grant	Laborers	Laser Beam Operator	\$35.35	<u>7B</u>	<u>1M</u>	
Grant	Laborers	Miner, Class "a"	\$34.81	<u>7B</u>	<u>1M</u>	
Grant	Laborers	Miner, Class "c"	\$35.35	<u>7B</u>	<u>1M</u>	
Grant	Laborers	Miner, Class "d"	\$35.63	<u>7B</u>	<u>1M</u>	
Grant	Laborers	Monitor Operator, Air Track Or Similar Mounting	\$35.35	<u>7B</u>	<u>1M</u>	
Grant	Laborers	Mortar Mixer	\$35.35	<u>7B</u>	<u>1M</u>	
Grant	Laborers	Nipper	\$34.81	<u>7B</u>	<u>1M</u>	
Grant	Laborers	Nozzleman	\$35.35	<u>7B</u>	<u>1M</u>	
Grant	Laborers	Nozzleman, Water (to Include Fire Hose), Air Or Steam	\$35.08	<u>7B</u>	<u>1M</u>	
Grant	Laborers	Pavement Breaker, 90 Lbs. & Over	\$35.35	<u>7B</u>	<u>1M</u>	
Grant	Laborers	Pavement Breaker, Under 90 Lbs.	\$35.08	<u>7B</u>	<u>1M</u>	
Grant	Laborers	Pipelayer	\$35.35	<u>7B</u>	<u>1M</u>	
Grant	Laborers	Pipelayer, Corrugated Metal Culvert And Multi-plate	\$35.08	<u>7B</u>	<u>1M</u>	
Grant	Laborers	Pipewrapper	\$35.35	<u>7B</u>	<u>1M</u>	
Grant	Laborers	Plasterer Tenders	\$35.35	<u>7B</u>	<u>1M</u>	
Grant	Laborers	Pot Tender	\$35.08	<u>7B</u>	<u>1M</u>	
Grant	Laborers	Powderman	\$37.00	<u>7B</u>	<u>1M</u>	
Grant	Laborers	Powderman Helper	\$35.08	<u>7B</u>	<u>1M</u>	

REQUEST FOR BIDS PACKET (Page 18 of 30)
GRANT COUNTY COURTHOUSE Parking Lot “E” REPLACEMENT
Project Number FM14003

APPENDIX C
(Page C-3)

Grant	Laborers	Power Buggy Operator	\$35.08	<u>7B</u>	<u>1M</u>	
Grant	Laborers	Power Tool Operator, Gas, Electric, Pneumatic	\$35.08	<u>7B</u>	<u>1M</u>	
Grant	Laborers	Railroad Equipment, Power Driven, Except Dual Mobile	\$35.08	<u>7B</u>	<u>1M</u>	
Grant	Laborers	Railroad Power Spiker Or Puller, Dual Mobile	\$35.08	<u>7B</u>	<u>1M</u>	
Grant	Laborers	Remote Equipment Operator	\$35.63	<u>7B</u>	<u>1M</u>	
Grant	Laborers	Remote Equipment Operator (i.e. Compaction And Demolition)	\$35.08	<u>7B</u>	<u>1M</u>	
Grant	Laborers	Rigger/signal Person	\$35.08	<u>7B</u>	<u>1M</u>	
Grant	Laborers	Riprap Person	\$34.81	<u>7B</u>	<u>1M</u>	
Grant	Laborers	Rodder & Spreader	\$35.08	<u>7B</u>	<u>1M</u>	
Grant	Laborers	Sandblast Tailhoseman	\$34.81	<u>7B</u>	<u>1M</u>	
Grant	Laborers	Scaffold Erector, Wood Or Steel	\$34.81	<u>7B</u>	<u>1M</u>	
Grant	Laborers	Stake Jumper	\$34.81	<u>7B</u>	<u>1M</u>	
Grant	Laborers	Structural Mover	\$34.81	<u>7B</u>	<u>1M</u>	
Grant	Laborers	Tailhoseman (water Nozzle)	\$34.81	<u>7B</u>	<u>1M</u>	
Grant	Laborers	Timber Bucker & Faller (by Hand)	\$34.81	<u>7B</u>	<u>1M</u>	
Grant	Laborers	Track Laborer (rr)	\$34.81	<u>7B</u>	<u>1M</u>	
Grant	Laborers	Traffic Control Laborer	\$32.71	<u>7B</u>	<u>1M</u>	<u>8T</u>
Grant	Laborers	Traffic Control Supervisor	\$33.71	<u>7B</u>	<u>1M</u>	<u>8S</u>
Grant	Laborers	Trencher, Shawnee	\$35.08	<u>7B</u>	<u>1M</u>	
Grant	Laborers	Trenchless Technology Technician	\$35.35	<u>7B</u>	<u>1M</u>	
Grant	Laborers	Truck Loader	\$34.81	<u>7B</u>	<u>1M</u>	
Grant	Laborers	Tugger Operator	\$35.08	<u>7B</u>	<u>1M</u>	
Grant	Laborers	Vibrators, All	\$35.35	<u>7B</u>	<u>1M</u>	
Grant	Laborers	Wagon Drills	\$35.08	<u>7B</u>	<u>1M</u>	
Grant	Laborers	Water Pipe Liner	\$35.08	<u>7B</u>	<u>1M</u>	
Grant	Laborers	Welder, Electric, Manual Or Automatic (hdpe Or Similar Pipe And Liner)	\$35.63	<u>7B</u>	<u>1M</u>	
Grant	Laborers	Well-point Person	\$34.81	<u>7B</u>	<u>1M</u>	
Grant	Laborers	Wheelbarrow, Power Driven	\$35.08	<u>7B</u>	<u>1M</u>	
Grant	Power Equipment Operators	A-frame Truck (2 Or More Drums)	\$39.34	<u>7B</u>	<u>1M</u>	<u>8D</u>
Grant	Power Equipment Operators	A-frame Truck (single Drum)	\$38.73	<u>7B</u>	<u>1M</u>	<u>8D</u>
Grant	Power Equipment Operators	Asphalt Plant Operator	\$39.94	<u>7B</u>	<u>1M</u>	<u>8D</u>

REQUEST FOR BIDS PACKET (Page 19 of 30)
GRANT COUNTY COURTHOUSE Parking Lot “E” REPLACEMENT
Project Number FM14003

APPENDIX C
(Page C-4)

Grant	Power Equipment Operators	Assistant Plant Operator, Fireman Or Pugmixer (asphalt)	\$38.73	<u>7B</u>	<u>1M</u>	<u>8D</u>
Grant	Power Equipment Operators	Assistant Refrigeration Plant & Chiller Operator (over 1000 Ton)	\$39.34	<u>7B</u>	<u>1M</u>	<u>8D</u>
Grant	Power Equipment Operators	Assistant Refrigeration Plant (under 1000 Ton)	\$38.73	<u>7B</u>	<u>1M</u>	<u>8D</u>
Grant	Power Equipment Operators	Automatic Subgrader (ditches & Trimmers)	\$39.94	<u>7B</u>	<u>1M</u>	<u>8D</u>
Grant	Power Equipment Operators	Backfillers (cleveland & Similar)	\$39.34	<u>7B</u>	<u>1M</u>	<u>8D</u>
Grant	Power Equipment Operators	Backhoe & Hoe Ram (under 3/4 Yd.)	\$39.66	<u>7B</u>	<u>1M</u>	<u>8D</u>
Grant	Power Equipment Operators	Backhoe (45,000 Gw & Under)	\$39.66	<u>7B</u>	<u>1M</u>	<u>8D</u>
Grant	Power Equipment Operators	Backhoe (45,000 Gw To 110,000 Gw)	\$39.94	<u>7B</u>	<u>1M</u>	<u>8D</u>
Grant	Power Equipment Operators	Backhoe (over 110,000 Gw)	\$40.21	<u>7B</u>	<u>1M</u>	<u>8D</u>
Grant	Power Equipment Operators	Backhoes & Hoe Ram (3 Yds & Over)	\$40.21	<u>7B</u>	<u>1M</u>	<u>8D</u>
Grant	Power Equipment Operators	Backhoes & Hoe Ram (3/4 Yd. To 3 Yd.)	\$39.94	<u>7B</u>	<u>1M</u>	<u>8D</u>
Grant	Power Equipment Operators	Bagley Or Stationary Scraper	\$38.73	<u>7B</u>	<u>1M</u>	<u>8D</u>
Grant	Power Equipment Operators	Batch & Wet Mix Operator (multiple Units, 2 & Incl. 4)	\$39.94	<u>7B</u>	<u>1M</u>	<u>8D</u>
Grant	Power Equipment Operators	Batch Plant & Wet Mix Operator, Single Unit (concrete)	\$39.34	<u>7B</u>	<u>1M</u>	<u>8D</u>
Grant	Power Equipment Operators	Batch Plant (over 4 Units)	\$39.94	<u>7B</u>	<u>1M</u>	<u>8D</u>
Grant	Power Equipment Operators	Belt Finishing Machine	\$38.73	<u>7B</u>	<u>1M</u>	<u>8D</u>
Grant	Power Equipment Operators	Belt Loader (kocal Or Similar)	\$39.34	<u>7B</u>	<u>1M</u>	<u>8D</u>
Grant	Power Equipment Operators	Belt-crete Conveyors With Power Pack Or Similar	\$39.34	<u>7B</u>	<u>1M</u>	<u>8D</u>
Grant	Power Equipment Operators	Bending Machine	\$39.34	<u>7B</u>	<u>1M</u>	<u>8D</u>
Grant	Power Equipment Operators	Bit Grinders	\$38.41	<u>7B</u>	<u>1M</u>	<u>8D</u>
Grant	Power Equipment Operators	Blade (finish & Bluetop), Automatic, Cmi, Abc, Finish Athey & Huber & Similar When Used As Automatic	\$40.21	<u>7B</u>	<u>1M</u>	<u>8D</u>
Grant	Power Equipment Operators	Blade Operator (motor Patrol & Attachments)	\$39.94	<u>7B</u>	<u>1M</u>	<u>8D</u>
Grant	Power Equipment Operators	Blower Operator (cement)	\$38.73	<u>7B</u>	<u>1M</u>	<u>8D</u>
Grant	Power Equipment Operators	Boat Operator	\$38.41	<u>7B</u>	<u>1M</u>	<u>8D</u>
Grant	Power Equipment Operators	Bob Cat (skid Steer)	\$39.34	<u>7B</u>	<u>1M</u>	<u>8D</u>
Grant	Power Equipment Operators	Bolt Threading Machine	\$38.41	<u>7B</u>	<u>1M</u>	<u>8D</u>

REQUEST FOR BIDS PACKET (Page 20 of 30)
GRANT COUNTY COURTHOUSE Parking Lot “E” REPLACEMENT
Project Number FM14003

APPENDIX C
(Page C-5)

Grant	Power Equipment Operators	Boom Cats (side)	\$39.94	<u>7B</u>	<u>1M</u>	<u>8D</u>
Grant	Power Equipment Operators	Boring Machine (earth)	\$39.34	<u>7B</u>	<u>1M</u>	<u>8D</u>
Grant	Power Equipment Operators	Boring Machine (Rock Under 8" Bit - Quarry Master, Joy Or Similar)	\$39.34	<u>7B</u>	<u>1M</u>	<u>8D</u>
Grant	Power Equipment Operators	Bump Cutter (wayne, Saginaw Or Similar)	\$39.34	<u>7B</u>	<u>1M</u>	<u>8D</u>
Grant	Power Equipment Operators	Cableway Controller (dispatcher)	\$39.94	<u>7B</u>	<u>1M</u>	<u>8D</u>
Grant	Power Equipment Operators	Cableway Operators	\$40.21	<u>7B</u>	<u>1M</u>	<u>8D</u>
Grant	Power Equipment Operators	Canal Lining Machine (concrete)	\$39.34	<u>7B</u>	<u>1M</u>	<u>8D</u>
Grant	Power Equipment Operators	Carrydeck & Boom Truck (under 25 Tons)	\$39.66	<u>7B</u>	<u>1M</u>	<u>8D</u>
Grant	Power Equipment Operators	Cement Hog	\$38.73	<u>7B</u>	<u>1M</u>	<u>8D</u>
Grant	Power Equipment Operators	Chipper (without Crane) Cleaning & Doping Machine (pipeline)	\$39.34	<u>7B</u>	<u>1M</u>	<u>8D</u>
Grant	Power Equipment Operators	Clamshell, Dragline	\$41.31	<u>7B</u>	<u>1M</u>	<u>8D</u>
Grant	Power Equipment Operators	Compactor (self-propelled With Blade)	\$39.94	<u>7B</u>	<u>1M</u>	<u>8D</u>
Grant	Power Equipment Operators	Compressor (2000 Cfm Or Over, 2 Or More, Gas Diesel Or Electric Power)	\$38.73	<u>7B</u>	<u>1M</u>	<u>8D</u>
Grant	Power Equipment Operators	Compressors (under 2000 Cfm, Gas, Diesel Or Electric Power)	\$38.41	<u>7B</u>	<u>1M</u>	<u>8D</u>
Grant	Power Equipment Operators	Concrete Cleaning / Decontamination Machine Operator	\$40.21	<u>7B</u>	<u>1M</u>	<u>8D</u>
Grant	Power Equipment Operators	Concrete Pump Boon Truck	\$39.94	<u>7B</u>	<u>1M</u>	<u>8D</u>
Grant	Power Equipment Operators	Concrete Pumps (squeeze-crete, Flow-crete, Whitman & Similar)	\$39.50	<u>7B</u>	<u>1M</u>	<u>8D</u>
Grant	Power Equipment Operators	Concrete Saw (multiple Cut)	\$38.73	<u>7B</u>	<u>1M</u>	<u>8D</u>
Grant	Power Equipment Operators	Concrete Slip Form Paver	\$39.94	<u>7B</u>	<u>1M</u>	<u>8D</u>
Grant	Power Equipment Operators	Conveyor Aggregate Delivery Systems (c.a.d.)	\$39.94	<u>7B</u>	<u>1M</u>	<u>8D</u>
Grant	Power Equipment Operators	Crane Oiler- Driver (cdl Required) & Cable Tender, Mucking Machine	\$38.41	<u>7B</u>	<u>1M</u>	<u>8D</u>
Grant	Power Equipment Operators	Cranes (25 Tons & Under), All Attachments Incl. Clamshell, Dragline	\$39.66	<u>7B</u>	<u>1M</u>	<u>8D</u>

REQUEST FOR BIDS PACKET (Page 21 of 30)
GRANT COUNTY COURTHOUSE Parking Lot “E” REPLACEMENT
Project Number FM14003

APPENDIX C
(Page C-6)

Grant	Power Equipment Operators	Cranes (25 Tons To And Including 45 Tons), All Attachments Incl. Clamshell, Dragline	\$39.94	<u>7B</u>	<u>1M</u>	<u>8D</u>
Grant	Power Equipment Operators	Cranes (45 Tons To 85 Tons), All Attachments Incl. Clamshell And Dragline	\$40.21	<u>7B</u>	<u>1M</u>	<u>8D</u>
Grant	Power Equipment Operators	Cranes (85 Tons & Over) And All Climbing, Overhead, Rail & Tower. All Attachments Incl.	\$41.31	<u>7B</u>	<u>1M</u>	<u>8D</u>
Grant	Power Equipment Operators	Crusher Feeder	\$38.41	<u>7B</u>	<u>1M</u>	<u>8D</u>
Grant	Power Equipment Operators	Crusher, Grizzle & Screening Plant Operator	\$39.94	<u>7B</u>	<u>1M</u>	<u>8D</u>
Grant	Power Equipment Operators	Curb Extruder (asphalt Or Concrete)	\$39.50	<u>7B</u>	<u>1M</u>	<u>8D</u>
Grant	Power Equipment Operators	Deck Engineer	\$39.34	<u>7B</u>	<u>1M</u>	<u>8D</u>
Grant	Power Equipment Operators	Deck Hand	\$38.41	<u>7B</u>	<u>1M</u>	<u>8D</u>
Grant	Power Equipment Operators	Derricks & Stifflegs (65 Tons & Over)	\$40.21	<u>7B</u>	<u>1M</u>	<u>8D</u>
Grant	Power Equipment Operators	Derricks & Stifflegs (under 65 Tons)	\$39.66	<u>7B</u>	<u>1M</u>	<u>8D</u>
Grant	Power Equipment Operators	Distributor Leverman	\$38.73	<u>7B</u>	<u>1M</u>	<u>8D</u>
Grant	Power Equipment Operators	Ditch Witch Or Similar	\$38.73	<u>7B</u>	<u>1M</u>	<u>8D</u>
Grant	Power Equipment Operators	Dope Pots (power Agitated	\$38.73	<u>7B</u>	<u>1M</u>	<u>8D</u>
Grant	Power Equipment Operators	Dozer / Tractor (up To D-6 Or Equivalent) And Traxcavator	\$39.34	<u>7B</u>	<u>1M</u>	<u>8D</u>
Grant	Power Equipment Operators	Dozer / Tractors (d-6 & Equivalent & Over)	\$39.94	<u>7B</u>	<u>1M</u>	<u>8D</u>
Grant	Power Equipment Operators	Dozer, 834 R/t & Similar	\$39.94	<u>7B</u>	<u>1M</u>	<u>8D</u>
Grant	Power Equipment Operators	Drill Doctor	\$39.94	<u>7B</u>	<u>1M</u>	<u>8D</u>
Grant	Power Equipment Operators	Driller Licensed	\$41.31	<u>7B</u>	<u>1M</u>	<u>8D</u>
Grant	Power Equipment Operators	Drillers Helper	\$38.41	<u>7B</u>	<u>1M</u>	<u>8D</u>
Grant	Power Equipment Operators	Drilling Equipment (8" Bit & Over - Robbins, Reverse Circulation & Similar)	\$39.66	<u>7B</u>	<u>1M</u>	<u>8D</u>
Grant	Power Equipment Operators	Drills (churn, Core, Calyx Or Diamond)	\$39.50	<u>7B</u>	<u>1M</u>	<u>8D</u>
Grant	Power Equipment Operators	Elevating Belt (holland Type)	\$40.21	<u>7B</u>	<u>1M</u>	<u>8D</u>
Grant	Power Equipment Operators	Elevating Belt-type Loader (euclid, Barber Green & Similar)	\$39.34	<u>7B</u>	<u>1M</u>	<u>8D</u>
Grant	Power Equipment Operators	Elevating Grader-type Loader (dumor, Adams Or Similar)	\$39.34	<u>7B</u>	<u>1M</u>	<u>8D</u>
Grant	Power Equipment Operators	Elevator Hoisting Materials	\$38.73	<u>7B</u>	<u>1M</u>	<u>8D</u>

REQUEST FOR BIDS PACKET (Page 22 of 30)
GRANT COUNTY COURTHOUSE Parking Lot “E” REPLACEMENT
Project Number FM14003

APPENDIX C
(Page C-7)

Grant	Power Equipment Operators	Equipment Serviceman, Greaser & Oiler	\$39.50	<u>7B</u>	<u>1M</u>	<u>8D</u>
Grant	Power Equipment Operators	Fireman & Heater Tender	\$38.41	<u>7B</u>	<u>1M</u>	<u>8D</u>
Grant	Power Equipment Operators	Fork Lift Or Lumber Stacker, Hydra-life & Similar	\$38.73	<u>7B</u>	<u>1M</u>	<u>8D</u>
Grant	Power Equipment Operators	Generator Plant Engineers (diesel Or Electric)	\$39.34	<u>7B</u>	<u>1M</u>	<u>8D</u>
Grant	Power Equipment Operators	Gin Trucks (pipeline)	\$38.73	<u>7B</u>	<u>1M</u>	<u>8D</u>
Grant	Power Equipment Operators	Grade Checker	\$39.66	<u>7B</u>	<u>1M</u>	<u>8D</u>
Grant	Power Equipment Operators	Gunite Combination Mixer & Compressor	\$39.34	<u>7B</u>	<u>1M</u>	<u>8D</u>
Grant	Power Equipment Operators	H.d. Mechanic	\$40.21	<u>7B</u>	<u>1M</u>	<u>8D</u>
Grant	Power Equipment Operators	H.d. Welder	\$40.21	<u>7B</u>	<u>1M</u>	<u>8D</u>
Grant	Power Equipment Operators	Helicopter Pilot	\$41.31	<u>7B</u>	<u>1M</u>	<u>8D</u>
Grant	Power Equipment Operators	Helper, Mechanic Or Welder, H.D	\$38.41	<u>7B</u>	<u>1M</u>	<u>8D</u>
Grant	Power Equipment Operators	Hoe Ram	\$39.66	<u>7B</u>	<u>1M</u>	<u>8D</u>
Grant	Power Equipment Operators	Hoist (2 Or More Drums Or Tower Hoist)	\$39.50	<u>7B</u>	<u>1M</u>	<u>8D</u>
Grant	Power Equipment Operators	Hoist, Single Drum	\$38.73	<u>7B</u>	<u>1M</u>	<u>8D</u>
Grant	Power Equipment Operators	Hydraulic Platform Trailers (goldhofer, Shaurerly And Similar)	\$40.21	<u>7B</u>	<u>1M</u>	<u>8D</u>
Grant	Power Equipment Operators	Hydro-seeder, Mulcher, Nozzleman	\$38.41	<u>7B</u>	<u>1M</u>	<u>8D</u>
Grant	Power Equipment Operators	Lime Batch Tank Operator (recycle Train)	\$39.94	<u>7B</u>	<u>1M</u>	<u>8D</u>
Grant	Power Equipment Operators	Lime Brain Operator (recycle Train)	\$39.94	<u>7B</u>	<u>1M</u>	<u>8D</u>
Grant	Power Equipment Operators	Loader (360 Degrees Revolving Koehring Scooper Or Similar)	\$40.21	<u>7B</u>	<u>1M</u>	<u>8D</u>
Grant	Power Equipment Operators	Loader Operator (front-end & Overhead, 4 Yds. Incl. 8 Yds.)	\$39.94	<u>7B</u>	<u>1M</u>	<u>8D</u>
Grant	Power Equipment Operators	Loaders (bucket Elevators And Conveyors)	\$38.73	<u>7B</u>	<u>1M</u>	<u>8D</u>
Grant	Power Equipment Operators	Loaders (overhead & Front-end, Over 8 Yds. To 10 Yds.)	\$40.21	<u>7B</u>	<u>1M</u>	<u>8D</u>
Grant	Power Equipment Operators	Loaders (overhead & Front-end, Under 4 Yds.. R/t)	\$39.50	<u>7B</u>	<u>1M</u>	<u>8D</u>
Grant	Power Equipment Operators	Loaders (overhead And Front-end, 10 Yds. & Over)	\$41.31	<u>7B</u>	<u>1M</u>	<u>8D</u>
Grant	Power Equipment Operators	Locomotive Engineer	\$39.34	<u>7B</u>	<u>1M</u>	<u>8D</u>
Grant	Power Equipment Operators	Longitudinal Float	\$38.73	<u>7B</u>	<u>1M</u>	<u>8D</u>

REQUEST FOR BIDS PACKET (Page 23 of 30)
GRANT COUNTY COURTHOUSE Parking Lot “E” REPLACEMENT
Project Number FM14003

APPENDIX C
(Page C-8)

Grant	Power Equipment Operators	Master Environmental Maintenance Technician	\$40.21	<u>7B</u>	<u>1M</u>	<u>8D</u>
Grant	Power Equipment Operators	Mixer (portable - Concrete)	\$38.73	<u>7B</u>	<u>1M</u>	<u>8D</u>
Grant	Power Equipment Operators	Mixermobile	\$39.34	<u>7B</u>	<u>1M</u>	<u>8D</u>
Grant	Power Equipment Operators	Mobile Crusher Operator (recycle Train)	\$39.94	<u>7B</u>	<u>1M</u>	<u>8D</u>
Grant	Power Equipment Operators	Mucking Machine	\$39.34	<u>7B</u>	<u>1M</u>	<u>8D</u>
Grant	Power Equipment Operators	Multiple Dozer Units With Single Blade	\$39.94	<u>7B</u>	<u>1M</u>	<u>8D</u>
Grant	Power Equipment Operators	Pavement Breaker, Hydra-hammer & Similar	\$38.73	<u>7B</u>	<u>1M</u>	<u>8D</u>
Grant	Power Equipment Operators	Paving (dual Drum)	\$39.66	<u>7B</u>	<u>1M</u>	<u>8D</u>
Grant	Power Equipment Operators	Paving Machine (asphalt And Concrete)	\$39.94	<u>7B</u>	<u>1M</u>	<u>8D</u>
Grant	Power Equipment Operators	Piledriving Engineers	\$39.66	<u>7B</u>	<u>1M</u>	<u>8D</u>
Grant	Power Equipment Operators	Plant Oiler	\$38.41	<u>7B</u>	<u>1M</u>	<u>8D</u>
Grant	Power Equipment Operators	Posthole Auger Or Punch	\$39.34	<u>7B</u>	<u>1M</u>	<u>8D</u>
Grant	Power Equipment Operators	Power Broom	\$38.73	<u>7B</u>	<u>1M</u>	<u>8D</u>
Grant	Power Equipment Operators	Pump (grout Or Jet)	\$39.34	<u>7B</u>	<u>1M</u>	<u>8D</u>
Grant	Power Equipment Operators	Pumpman	\$38.41	<u>7B</u>	<u>1M</u>	<u>8D</u>
Grant	Power Equipment Operators	Quad-track Or Similar Equipment	\$39.94	<u>7B</u>	<u>1M</u>	<u>8D</u>
Grant	Power Equipment Operators	Railroad Ballast Regulation Operator (self-propelled)	\$38.73	<u>7B</u>	<u>1M</u>	<u>8D</u>
Grant	Power Equipment Operators	Railroad Power Tamper Operator (self-propelled)	\$38.73	<u>7B</u>	<u>1M</u>	<u>8D</u>
Grant	Power Equipment Operators	Railroad Tamper Jack Operator (self-propelled)	\$38.73	<u>7B</u>	<u>1M</u>	<u>8D</u>
Grant	Power Equipment Operators	Railroad Track Liner Operator (self-propelled)	\$39.66	<u>7B</u>	<u>1M</u>	<u>8D</u>
Grant	Power Equipment Operators	Refrigeration Plant Engineer (1000 Tons & Over)	\$39.66	<u>7B</u>	<u>1M</u>	<u>8D</u>
Grant	Power Equipment Operators	Refrigeration Plant Engineer (under 1000 Ton)	\$39.50	<u>7B</u>	<u>1M</u>	<u>8D</u>
Grant	Power Equipment Operators	Rollerman (finishing Asphalt Pavement)	\$39.94	<u>7B</u>	<u>1M</u>	<u>8D</u>
Grant	Power Equipment Operators	Rollers, All Types On Subgrade, Including Seal And Chip Coating (farm Type, Case, John Deere And Similar, or Compacting Vibrator), Except When Pulled B	\$38.41	<u>7B</u>	<u>1M</u>	<u>8D</u>
Grant	Power Equipment Operators	Roto Mill (pavement Grinder)	\$39.94	<u>7B</u>	<u>1M</u>	<u>8D</u>
Grant	Power Equipment Operators	Rotomill Groundsman	\$39.50	<u>7B</u>	<u>1M</u>	<u>8D</u>

REQUEST FOR BIDS PACKET (Page 24 of 30)
GRANT COUNTY COURTHOUSE Parking Lot “E” REPLACEMENT
Project Number FM14003

APPENDIX C
(Page C-9)

Grant	Power Equipment Operators	Rubber-tired Scrapers (multiple Engine With Three Or More Scrapers)	\$40.21	<u>7B</u>	<u>1M</u>	<u>8D</u>
Grant	Power Equipment Operators	Rubber-tired Skidders (r/t With Or Without Attachments)	\$39.50	<u>7B</u>	<u>1M</u>	<u>8D</u>
Grant	Power Equipment Operators	Scrapers, All, Rubber-tired	\$39.94	<u>7B</u>	<u>1M</u>	<u>8D</u>
Grant	Power Equipment Operators	Screed Operator	\$39.94	<u>7B</u>	<u>1M</u>	<u>8D</u>
Grant	Power Equipment Operators	Shovels (3 Yds. & Over)	\$40.21	<u>7B</u>	<u>1M</u>	<u>8D</u>
Grant	Power Equipment Operators	Shovels (under 3 Yds.)	\$39.94	<u>7B</u>	<u>1M</u>	<u>8D</u>
Grant	Power Equipment Operators	Signalman (whirleys, Highline, Hammerheads Or Similar)	\$39.66	<u>7B</u>	<u>1M</u>	<u>8D</u>
Grant	Power Equipment Operators	Soil Stabilizer (p & H Or Similar)	\$39.34	<u>7B</u>	<u>1M</u>	<u>8D</u>
Grant	Power Equipment Operators	Spray Curing Machine (concrete)	\$38.73	<u>7B</u>	<u>1M</u>	<u>8D</u>
Grant	Power Equipment Operators	Spreader Box (self-propelled)	\$38.73	<u>7B</u>	<u>1M</u>	<u>8D</u>
Grant	Power Equipment Operators	Spreader Machine	\$39.34	<u>7B</u>	<u>1M</u>	<u>8D</u>
Grant	Power Equipment Operators	Steam Cleaner	\$38.41	<u>7B</u>	<u>1M</u>	<u>8D</u>
Grant	Power Equipment Operators	Straddle Buggy (ross & Similar On Construction Job Only)	\$38.73	<u>7B</u>	<u>1M</u>	<u>8D</u>
Grant	Power Equipment Operators	Surface Heater & Planer Machine	\$39.50	<u>7B</u>	<u>1M</u>	<u>8D</u>
Grant	Power Equipment Operators	Tractor (farm Type R/t With Attachments, Except Backhoe)	\$38.73	<u>7B</u>	<u>1M</u>	<u>8D</u>
Grant	Power Equipment Operators	Traverse Finish Machine	\$39.34	<u>7B</u>	<u>1M</u>	<u>8D</u>
Grant	Power Equipment Operators	Trenching Machines (7 Ft. Depth & Over)	\$39.94	<u>7B</u>	<u>1M</u>	<u>8D</u>
Grant	Power Equipment Operators	Trenching Machines (under 7 Ft. Depth Capacity)	\$39.50	<u>7B</u>	<u>1M</u>	<u>8D</u>
Grant	Power Equipment Operators	Tug Boat Operator	\$39.94	<u>7B</u>	<u>1M</u>	<u>8D</u>
Grant	Power Equipment Operators	Tugger Operator	\$38.73	<u>7B</u>	<u>1M</u>	<u>8D</u>
Grant	Power Equipment Operators	Turnhead (with Re-screening)	\$39.50	<u>7B</u>	<u>1M</u>	<u>8D</u>
Grant	Power Equipment Operators	Turnhead Operator	\$39.34	<u>7B</u>	<u>1M</u>	<u>8D</u>
Grant	Power Equipment Operators	Ultra High Pressure Waterjet Cutting Tool System Operator, (30,000 Psi)	\$40.21	<u>7B</u>	<u>1M</u>	<u>8D</u>
Grant	Power Equipment Operators	Vactor Guzzler, Super Sucker	\$39.94	<u>7B</u>	<u>1M</u>	<u>8D</u>
Grant	Power Equipment Operators	Vacuum Blasting Machine Operator	\$40.21	<u>7B</u>	<u>1M</u>	<u>8D</u>
Grant	Power Equipment Operators	Vacuum Drill (reverse Circulation Drill Under 8" Bit)	\$39.50	<u>7B</u>	<u>1M</u>	<u>8D</u>
Grant	Power Equipment Operators	Welding Machine	\$38.41	<u>7B</u>	<u>1M</u>	<u>8D</u>
Grant	Power Equipment Operators	Whirleys & Hammerheads, All	\$40.21	<u>7B</u>	<u>1M</u>	<u>8D</u>
Grant	Traffic Control Stripers	Journey Level	\$42.33	<u>7A</u>	<u>1K</u>	

REQUEST FOR BIDS PACKET (Page 25 of 30)
GRANT COUNTY COURTHOUSE Parking Lot "E" REPLACEMENT
Project Number FM14003

APPENDIX D
(Page D-1)

U.S. Department of Justice
Civil Rights Division
Disability Rights Section



Americans with Disabilities Act

ADA Business Brief:

Restriping Parking Lots

Accessible Parking Spaces

When a business restripes a parking lot, it must provide accessible parking spaces as required by the ADA Standards for Accessible Design.

In addition, businesses or privately owned facilities that provide goods or services to the public have a continuing ADA obligation to remove barriers to access in existing parking lots when it is readily achievable to do so. Because restriping is relatively inexpensive, it is readily achievable in most cases.

This ADA Business Brief provides key information about how to create accessible car and van spaces and how many spaces to provide when parking lots are restriped.

Accessible Parking Spaces for Cars

Accessible parking spaces for cars have at least a 60-inch-wide access aisle located adjacent to the designated parking space. The access aisle is just wide enough to permit a person using a wheelchair to enter or exit the car. These parking spaces are identified with a sign and located on level ground.

Van-Accessible Parking Spaces

Van-accessible parking spaces are the same as accessible parking spaces for cars except for three features needed for vans:

- a wider access aisle (96") to accommodate a wheelchair lift;

REQUEST FOR BIDS PACKET (Page 26 of 30)
GRANT COUNTY COURTHOUSE Parking Lot "E" REPLACEMENT
Project Number FM14003

APPENDIX D
(Page D-2)

- vertical clearance to accommodate van height at the van parking space, the adjacent access aisle, and on the vehicular route to and from the van-accessible space, and
- an additional sign that identifies the parking spaces as "van accessible."



One of eight accessible parking spaces, but always at least one, must be van-accessible.

(illustration showing a van with a side-mounted wheelchair lift lowered onto a marked access aisle at a van-accessible parking space. A person using a wheelchair is getting out of the van. A dashed line shows the route from the lift to the sidewalk.)

Minimum Number of Accessible Parking Spaces

ADA Standards for Accessible Design 4.1.2(5)

Total Number of Parking Spaces Provided (per lot)	(Column A) Total Minimum Number of Accessible Parking Spaces (60" & 96" aisles)	Van-Accessible Parking Spaces with min. 96" wide access aisle	Accessible Parking Spaces with min. 60" wide access aisle
1 to 25	1	1	0
26 to 50	2	1	1
51 to 75	3	1	2
76 to 100	4	1	3
101 to 150	5	1	4
151 to 200	6	1	5

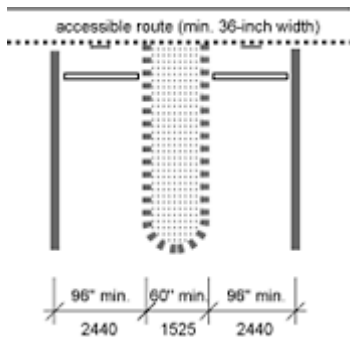
REQUEST FOR BIDS PACKET (Page 27 of 30)
GRANT COUNTY COURTHOUSE Parking Lot "E" REPLACEMENT
Project Number FM14003

APPENDIX D
(Page D-3)

201 to 300	7	1	6
301 to 400	8	1	7
401 to 500	9	2	7
501 to 1000	2% of total parking provided in each lot	<u>1/8 of Column A*</u>	<u>7/8 of Column A**</u>
1001 and over	20 plus 1 for each 100 over 1000	<u>1/8 of Column A*</u>	<u>7/8 of Column A**</u>

* one out of every 8 accessible spaces ** 7 out of every 8 accessible parking spaces

Features of Accessible Parking Spaces for Cars



(plan drawing showing an accessible parking space for cars with a 96 inch wide designated parking space, a 60 inch wide min. marked access aisle and the following notes)

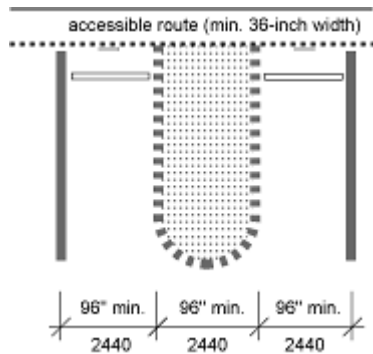
- **Sign with the international symbol of accessibility** mounted high enough so it can be seen while a vehicle is parked in the space.
- If the accessible route is located in front of the space, install wheelstops to keep vehicles from reducing width below 36 inches.

REQUEST FOR BIDS PACKET (Page 28 of 30)
GRANT COUNTY COURTHOUSE Parking Lot "E" REPLACEMENT
Project Number FM14003

APPENDIX D
(Page D-4)

- **Access aisle of at least 60-inch width must be level (1:50 maximum slope in all directions)**, be the same length as the adjacent parking space(s) it serves and must connect to an accessible route to the building. Ramps must not extend into the access aisle.
- **Boundary of the access aisle must be marked.** The end may be a squared or curved shape.
- Two parking spaces **may share an access aisle.**

Three Additional Features for Van-Accessible Parking Spaces



(plan drawing showing a van-accessible parking space with a 96 inch wide designated parking space, a 96 inch wide min. marked access aisle and the following notes)

- **Sign with "van accessible"** and the international symbol of accessibility mounted high enough so the sign can be seen when a vehicle is parked in the space
- **96" min. width access aisle**, level (max. slope 1:50 in all directions), located beside the van parking space
- **Min. 98-inch-high clearance** at van parking space, access aisle, and on vehicular route to and from van space

REQUEST FOR BIDS PACKET (Page 29 of 30)
GRANT COUNTY COURTHOUSE Parking Lot "E" REPLACEMENT
Project Number FM14003

APPENDIX D
(Page D-5)

Location

Accessible parking spaces must be located on the shortest accessible route of travel to an accessible facility entrance. Where buildings have multiple accessible entrances with adjacent parking, the accessible parking spaces must be dispersed and located closest to the accessible entrances.

When accessible parking spaces are added in an existing parking lot, locate the spaces on the most level ground close to the accessible entrance. An accessible route must always be provided from the accessible parking to the accessible entrance. An accessible route never has curbs or stairs, must be at least 3- feet wide, and has a firm, stable, slip-resistant surface. The slope along the accessible route should not be greater than 1:12 in the direction of travel.

Accessible parking spaces may be clustered in one or more lots if equivalent or greater accessibility is provided in terms of distance from the accessible entrance, parking fees, and convenience. Van-accessible parking spaces located in parking garages may be clustered on one floor (to accommodate the 98-inch minimum vertical height requirement).

Free Technical Assistance

Answers to technical and general questions about restriping parking lots or other ADA requirements are available by telephone on weekdays. You may also order the ADA Standards for Accessible Design and other ADA publications, including regulations for private businesses or State and local governments, at any time day or night. Information about ADA-related IRS tax credits and deductions is also available from the ADA Information Line.

Department of Justice

ADA Information Line

800-514-0301 (voice)

800-514-0383 (TTY)

REQUEST FOR BIDS PACKET (Page 30 of 30)
GRANT COUNTY COURTHOUSE Parking Lot “E” REPLACEMENT
Project Number FM14003

APPENDIX D
(Page D-6)

ADA Website and ADA Business Connection

You may also review or download information on the Department's ADA Internet site at any time. The site provides access to the [ADA Business Connection](http://www.usdoj.gov/crt/ada/index.html) and the ADA design standards, ADA regulations, ADA Policy Letters, technical assistance materials, and general ADA information. It also provides links to other Federal agencies, and updates on new ADA requirements and enforcement efforts.

www.usdoj.gov/crt/ada/index.html

Reference:

ADA Standards for Accessible Design (28 CFR Part 36):

§ 4.1.6 Alterations;

§ 4.1.2 Accessible Sites and Exterior Facilities: New Construction,

§ 4.1.6 Parking and Passenger Loading Zones, and

§ 4.3 Accessible Route