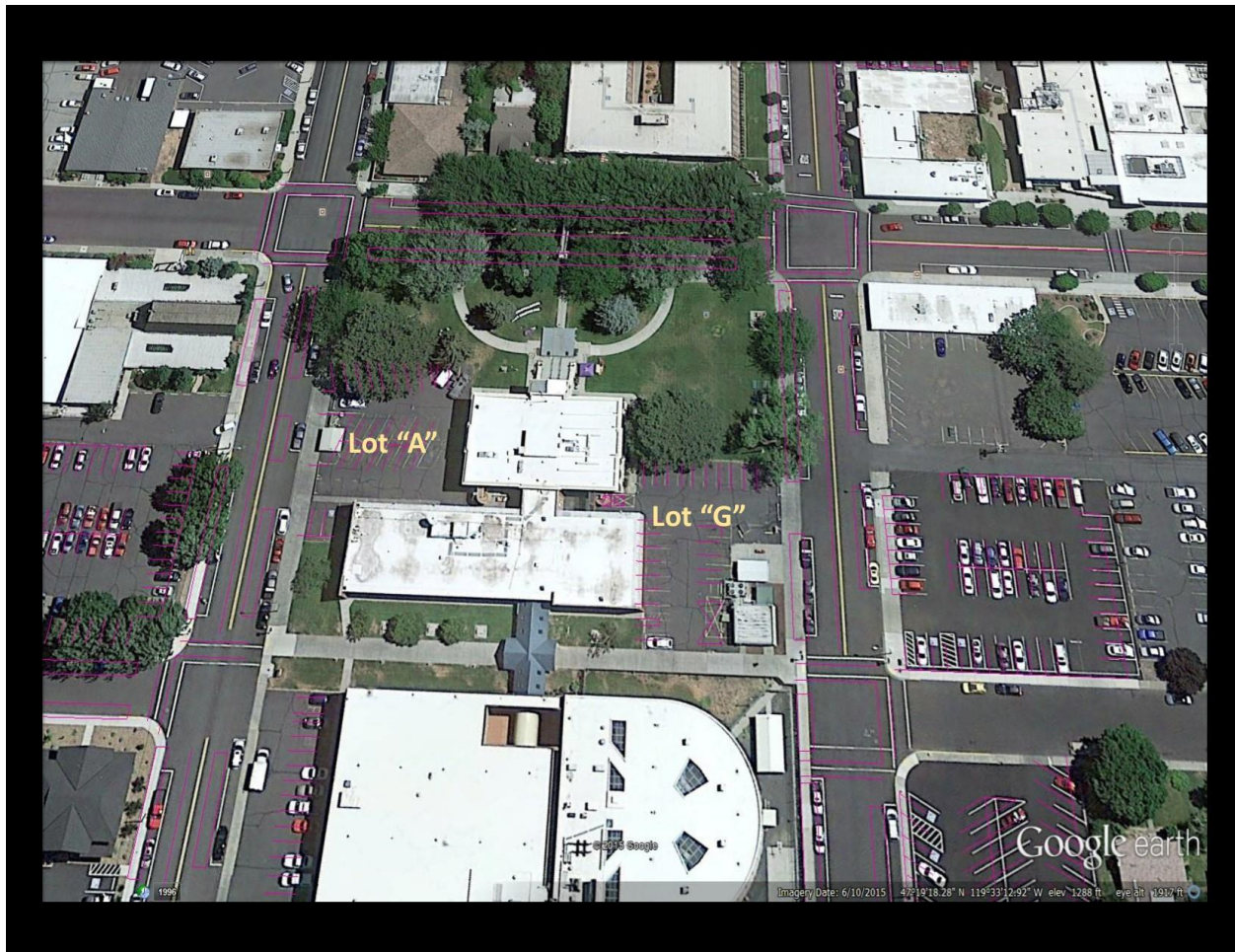


Parking lot contains approximately 25 spaces as depicted in attached photo. Specification for paint is also attached. Paint shall be applied with glass beads

Youth services parking lot will require only two directional arrows and one "wrong way" notation on pavement, there are no spaces.

Parking Lot "G" requires parking spaces, hatched areas as seen in photo.





“Specially Formulated” HI-PERFORMANCE Fast Dry Zone Marking Paint 17-270

SUGGESTED USES	<p>Suggested for use over a variety of asphalt and cement-based substrates. Ideal for striping airports, streets, parking lots, driveways, warehouse floors, sidewalks and curbs.</p> <p>Limitations: When applying over new asphalt and slurry seal type products, a small test patch must be applied to confirm compatibility and fitness for use. Paint temperature must be maintained above 40° F during application.</p> <p>CAUTION: When this product is used on floors or walking surfaces, it may become slippery when wet. Aggregate such as clean sand or walnut shells should be added if non-skid characteristics are desired. This paint is extremely flammable. Spray equipment specifically designed for application of traffic paint is required.</p>									
OUTSTANDING FEATURES	<p>This non-reflectORIZED synthetic resin zone marking paint offers fast dry properties, and very good hiding, abrasion and wear resistance. Excellent re-dissolving characteristics prevent buildup in lines, equipment and storage tanks. Outstanding spray characteristics provide crisp, sharp lines with air or airless equipment.</p>									
FINISH/SHEEN	Flat									
COLORS	WW (White), CC (Yellow), 28 (Black), 61 (Red)									
DRY/RECOAT TIME	<table><thead><tr><th></th><th><u>50°F and above</u></th><th></th></tr></thead><tbody><tr><td>Dry-to-No-Pick-Up</td><td>40-90 seconds*</td><td>*When applied with glass beads; without beads Dry-to-No-Pick-Up will be 5-10 minutes. Dry and recoat time is temperature, humidity and film thickness dependent.</td></tr><tr><td>Dry-to-Recoat</td><td>1 hour</td><td></td></tr></tbody></table>		<u>50°F and above</u>		Dry-to-No-Pick-Up	40-90 seconds*	*When applied with glass beads; without beads Dry-to-No-Pick-Up will be 5-10 minutes. Dry and recoat time is temperature, humidity and film thickness dependent.	Dry-to-Recoat	1 hour	
	<u>50°F and above</u>									
Dry-to-No-Pick-Up	40-90 seconds*	*When applied with glass beads; without beads Dry-to-No-Pick-Up will be 5-10 minutes. Dry and recoat time is temperature, humidity and film thickness dependent.								
Dry-to-Recoat	1 hour									
VEHICLE	Proprietary Synthetic Resins									
SOLIDS	By Volume: 49-51% / By Weight: 70-72%									
VOC	<280 grams per liter.									
FLASH POINT	1° F									
VISCOSITY	75-85 KU									
RECOMMENDED FILM THICKNESS	15.0 wet mils / 7.5 dry mils. Application of one coat, at 110 sq. ft. per gallon, is recommended. If asphalt bleed occurs, apply a first coat at 7-8 wet mils, followed by a second coat at 7-8 wet mils.									
COVERAGE	110 sq. ft. per gallon at recommended film thickness; 320 lineal feet per gallon for a 4" wide stripe at 15 mils wet film thickness. Actual coverage may vary depending on surface condition and product loss during application.									
SURFACE PREPARATION	<p>The surface to be painted must be clean and dry, free of dust, dirt, oil or grease. Fresh asphalt and slurry seal may require aging for one month or more to avoid discoloration and cracking of the paint film.</p> <p>WARNING! Removal of old paint by sanding, scraping or other means may generate dust or fumes that contain lead. Exposure to lead dust or fumes may cause brain damage or other adverse health effects, especially in children or pregnant women. Controlling exposure to lead or other hazardous substances requires the use of proper protective equipment, such as a properly fitted respirator (NIOSH approved) and proper containment and cleanup. For more information, call the National Lead Information Center at 1-800-424-LEAD (in US) or contact your local health authority.</p>									
THINNING	Not normally required, but if desired, use up to ½ pint toluene.									
APPLICATION CONDITIONS	Air, surface and material must be 40 - 90° F. This paint will thicken and will not pump or atomize properly at temperatures below 40°F. Do not paint during extremely cold, frosty, foggy or damp weather.									
PRODUCT APPLICATIONS	(X) Roller / (X) Conventional Spray <u>.055-.281</u> / (X) Airless --Tip Size <u>.017-.025</u> Note: Designed for conventional or airless spray application; spray equipment specifically designed for application of traffic paint is required. Small areas or stripes may be readily applied by a long nap roller.									
CLEAN UP	Rinse application tools and flush spray lines promptly with toluene or MEK.									

**CLEANING/
MAINTENANCE OF
CURED FILM**

Clean with high-pressure water spray.

**STORAGE AND
SHELF LIFE**

Store in a dry, well-ventilated area. Storage temperatures should be between 40° F and 100° F.
Shelf Life = 6 months, unopened. (Shake or mix prior to use.)

SPECIAL NOTES

All data and information is based on the white formulation.
Shake or mix well before using.

CAUTIONS!

CRYSTALLINE SILICA. KETONES. TOLUENE

Contents are **EXTREMELY FLAMMABLE**. Keep away from heat, sparks, and open flame. Vapors will accumulate readily and may ignite explosively. During use and until all vapors are gone: Keep area ventilated - Do not smoke - Extinguish all flames, pilot lights and heaters - Turn off stoves, electric tools and appliances, and any other sources of ignition.

VAPOR HARMFUL. Use only with adequate ventilation. To avoid overexposure, open windows and doors or use other means to ensure fresh air entry during application and drying. If you experience eye watering, headaches, or dizziness, increase fresh air, or wear respiratory protection (NIOSH approved) or leave the area. Adequate ventilation required when sanding or abrading the dried film. If adequate ventilation cannot be provided wear an approved particulate respirator (NIOSH approved). Follow respirator manufacturer's directions for respirator use. Avoid contact with eyes and skin. Wash hands after using. Keep container closed when not in use. Do not transfer contents to other containers for storage.

FIRST AID: In case of eye contact, flush thoroughly with large amounts of water for 15 minutes and get medical attention. For skin contact, wash thoroughly with soap and water. In case of respiratory difficulty, provide fresh air and call physician. If swallowed, call Poison Control Center, hospital emergency room, or physician immediately.

DELAYED EFFECTS FROM LONG TERM OVEREXPOSURE. Contains solvents which can cause permanent brain and nervous system damage. Intentional misuse by deliberately concentrating and inhaling the contents can be harmful or fatal. Abrading or sanding of the dry film may release crystalline silica which has been shown to cause lung damage and cancer under long term exposure.

**DO NOT TAKE INTERNALLY. KEEP OUT OF THE REACH OF CHILDREN.
FOR PROFESSIONAL USE ONLY. NOT FOR RESIDENTIAL USE.
SEE MATERIAL SAFETY DATA SHEET.**

HMIS: HEALTH = 2*, FIRE = 3, REACTIVITY = 1
4 = EXTREME, 3 = HIGH, 2 = MODERATE, 1 = SLIGHT, 0 = INSIGNIFICANT, * = CHRONIC

HOTW 7/15/09 CX17270WW 05 00

The information and recommendations set forth in this Data Sheet are based upon tests conducted by or on behalf of Columbia Paint & Coatings. Such information and recommendations set forth herein are subject to change and pertain to the product offered at the time of publication.



www.columbiapaint.com